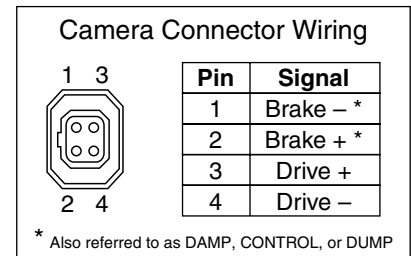
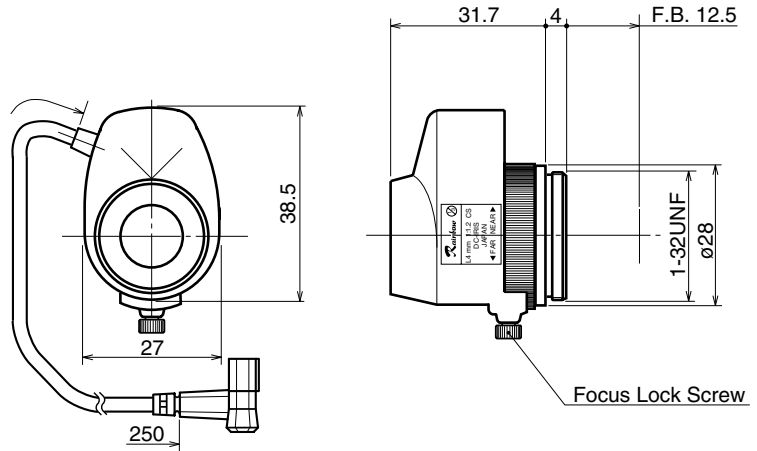


L4DC4P

4mm F1.2 – CS-Mount

Compatible with 1/3" & 1/4" Cameras

- Focal Length:** 4mm
- Max. Relative Aperture:** 1:1.2
- Iris:** F1.2~Approx. F360
With ND Spot Filter
- Angular Field of View:** 1/3": 63.9° × 49.1°
1/4": 49.1° × 37.3°
- Min. Object Distance (M.O.D.):** 0.1m (From Front Vertex)
- Optical Back Focal Distance:** 9.0mm (In Air)
- Operation:** Focus: Manual
Iris: IG (Auto-Close System)
- Operation Voltage:** Close to Open: Less than 3V
Open to Close: More than 0.5V
- Operation Temperature:** -10 ~ +50°C (+14 ~ 122° F)
- Filter Size:** None
- Mount:** CS-Mount
(Adjustable Lens Position)
- Size, Approx. Weight:** 27 × 38.5 × 31.7mm (w/h/d), 50g
(Approx. 1.1 × 1.5 × 1.2in., 1.8oz.)



L6DC4P

6mm F1.4 – CS-Mount

Compatible with 1/3" & 1/4" Cameras

- Focal Length:** 6mm
- Max. Relative Aperture:** 1:1.4
- Iris:** F1.4~Approx. F88
With ND Spot Filter
- Angular Field of View:** 1/3": 43.6° × 33.4°
1/4": 33.4° × 25.4°
- Min. Object Distance (M.O.D.):** 0.2m (From Front Vertex)
- Optical Back Focal Distance:** 13.93mm (In Air)
- Operation:** Focus: Manual
Iris: IG (Auto-Close System)
- Operation Voltage:** Close to Open: Less than 3V
Open to Close: More than 0.5V
- Operation Temperature:** -10 ~ +50°C (+14 ~ 122° F)
- Filter Size:** 30.5mm P0.5
- Mount:** CS-Mount
(Adjustable Lens Position)
- Size, Approx. Weight:** 41.5 × 51 × 42mm (w/h/d), 60g
(Approx. 1.6 × 2.0 × 1.7in., 2.1oz.)

